



CONTENTS:

▶ MIDYEAR ACADEMIC MESSAGE

▶ 2012 HOUSTON CONVENTION

▶ ACADEMIC ASSESSMENT DATA

▶ LEADERSHIP & RISK MANAGEMENT

▶ GRADUATING SENIORS



○ Midyear | ○ Chicago, IL | ○ 2012

# Lambda Phi Epsilon

# *focus*

*A NEW FOCUS ON THE FRATERNITY*



*Chicago Midyear 2012*

Salutations!

As we begin the start of a new year, I want to sincerely express my gratitude and admiration to all of our brothers who continue to uphold the number one purpose of our fraternity. In the past two years that I have been collecting academic data, I am proud to announce that our national GPA as well as our average chapter GPA are both over 3.0 for the first time! Kudos to those that have demonstrated exceptional academic achievement and those who encourage others to strive for similar goals.



As we continue to grow and bring bright, trustworthy, and motivated men into our wondrous band, we will continue to bring more Brotherhood, Scholarship, and Service to our Asian American communities at large. Although we have accomplished a lot already and have plenty more in the works, we never want to stop serving you, the brothers, in the best way possible. We are constantly working to redefine your expectations and your experience within Lambda Phi Epsilon, and your input plays a vital role in helping us achieve that. While we face challenges ahead, I have confidence in our resolve and our commitment to emerge successfully in preserving and maintaining our great fraternity. Here's to becoming better leaders this year!

Your Proud Servant,  
Tony Kim  
National Academic Chair

# ΛΦΕ Convention XXIII: Houston, Texas

## Pi Chapter, University of Houston

The brothers of Pi chapter at the University of Houston are deeply honored for the opportunity to host convention for the second time. The first Houston convention was held in 2005 and was described by many as “epic.” Since the announcement that Convention 2012 will be in Houston, we have been extremely excited and have been working diligently to ensure that everyone will experience this “epic” convention weekend coming up. Not only are we planning to weekend to cater to all our active brothers, but we are also putting extra emphasis in creating an eventful weekend for all our registered alumni and guests. Our goal is to outperform ourselves the from first time around, and make this the most memorable convention ever! Information about convention weekend events, registration, hotel, and everything else you’ll need to know can be found on the convention website. You can visit the site at: [www.convention.lambdaphiepsilon.com](http://www.convention.lambdaphiepsilon.com).



## Our Convention Vision

Since we are the most prestigious and prominent Asian-interest fraternity in the nation, we must continuously change and continue to press forward. Our vision for this coming convention is for everyone to experience and be educated on the core values that our fraternity was built on. Ask yourself what it means to be a Lambda, what we represent, and what we can offer.

We are hosting leadership and educational workshops to provide everyone with the *wisdom* to successfully lead your chapter, as well as succeeding in your personal endeavors. We also have a wide

array of traditional events to *honor* and strengthen the brotherhood nationally. To ensure future success, we are constantly looking for those brothers who possess the leadership and *courage* to lead this fraternity nationally. Convention is no longer just a weekend get-away. It is a unique experience encompassing the true meaning of our brotherhood.

## We Work Hard, We Play Hard

It would be unbrotherly of us to have you to leave Houston without having the time of your life. Houston is the 4<sup>th</sup> largest city in the nation with several sites to see, things to do, and people to meet. We want to take care of all our fraternity business, but at the same time, we also like to have a whole lot of fun. Several things are planned for your entertainment. We encourage everyone to arrive early to get the full experience of what Houston has to offer. Events have been planned the entire week leading up to convention weekend. We are looking forward to seeing everyone this coming memorial weekend. Experience what true southern hospitality is. So come on out, and see ya’ll in Texas!



# ΛΦΕ Lambda Phi Epsilon: Academic Assessment

## Academic Assessments

I have successfully gathered academic data from the majority of all active chapters through academic assessments and have carefully analyzed the data to provide results on the academic status of our fraternity on the national level. In the past two years of collecting academic data, I am proud to announce that the results show our national GPA and average chapter GPA are above 3.0 for the first time! I commend all of you and as an important tradition in the fraternity, we will continue to recognize exceptional Lambda Phi Epsilon members who have demonstrated exceptional leadership and academic excellence by providing three scholarships for 2012. The applications have been sent out to all chapters and I encourage everyone that is eligible to apply. The winning candidates will be recognized formally at the 2012 convention.

We received 33/35 academic assessments and our data shows that our active strength is at 470 with the average member being a 3rd year junior. The national average active's GPA is 3.05 and you will notice our GPA distribution is skewed left as shown in figure 2. The average active house consists of 15 members with an average house GPA of 3.11. See the figures to the right to view data trends over time.

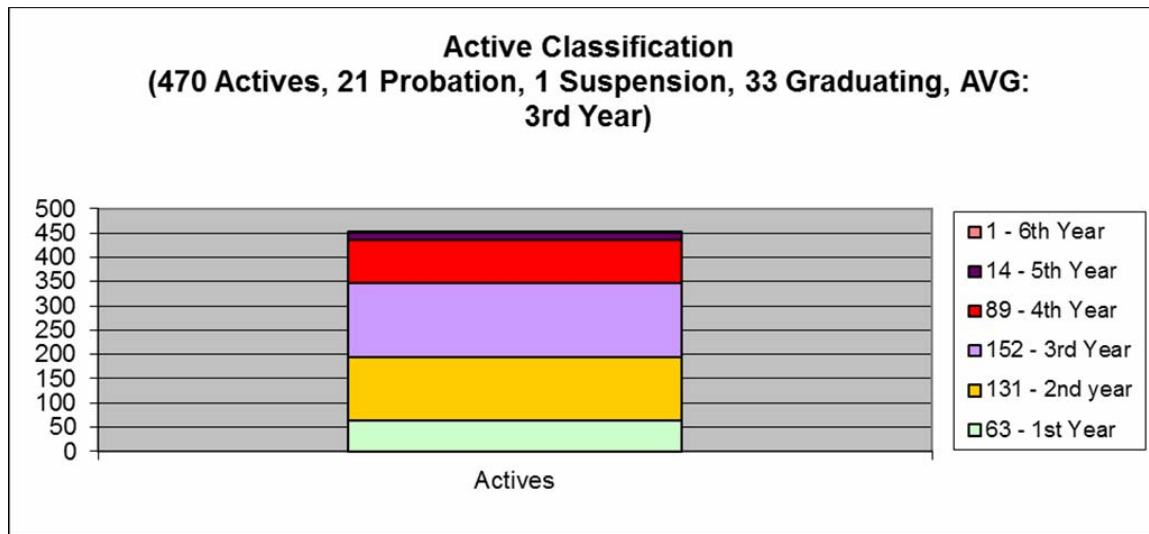


Figure 1: Active Classification

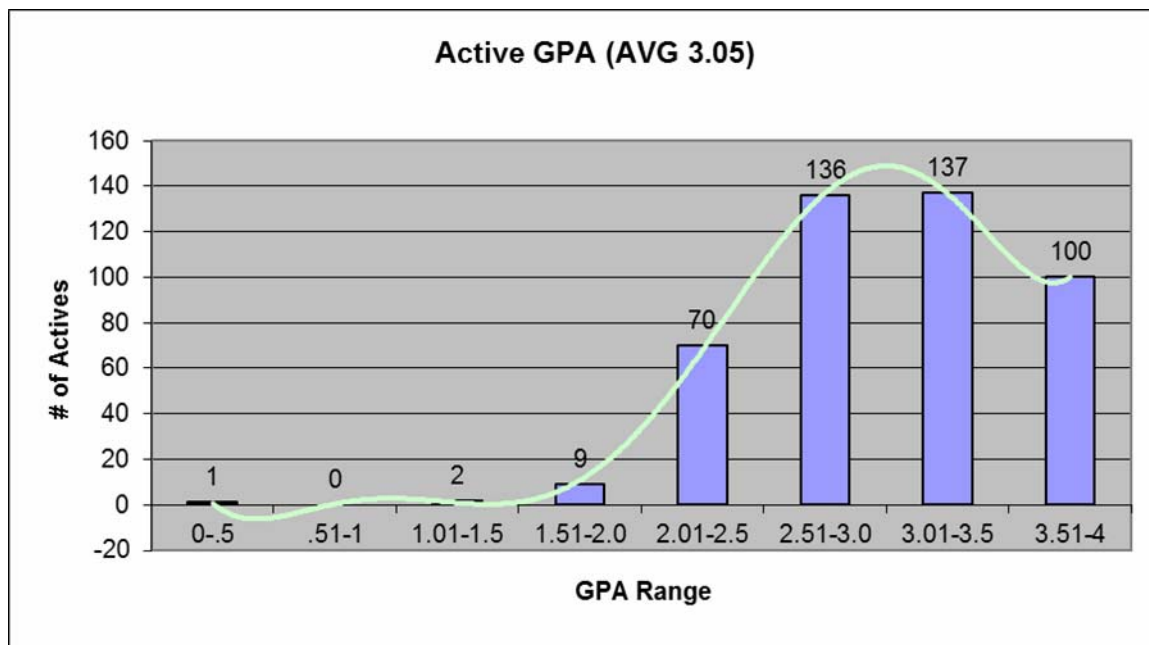
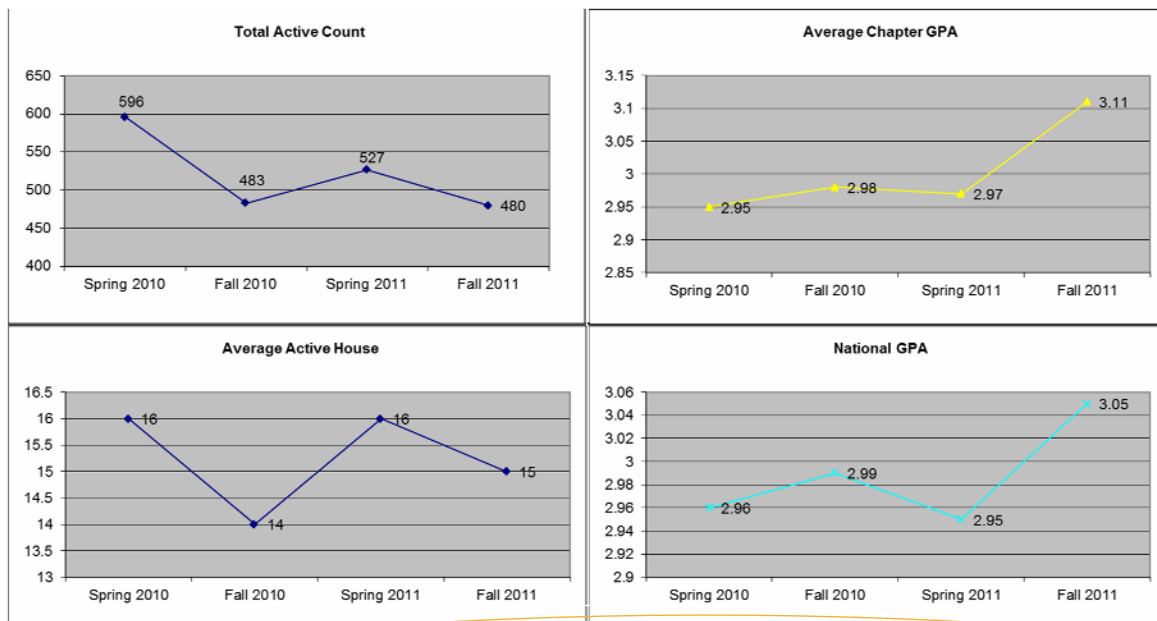


Figure 2: Active GPA



# ΛΦΕ: Midyear – Leadership & Risk Management



Attorney Mark P. Katz – Risk Management



J.D. Louk – Leadership



ΛΦΕ Group Sessions – Chapter Management

## ΛΦΕ Midyear

*“Leadership is the art of getting someone else to do something you want done because he wants to do it.” – Dwight D. Eisenhower*

This year’s Midyear focused around leadership and risk management; two areas that are crucial for the longevity of our fraternity. To help facilitate the discussion, we brought in Marc P. Katz who has been serving as our fraternal legal counsel since summer. Marc had served as the president of his fraternity as well as chairman of the North-American Interfraternity Conference. Marc practices corporate and fraternal law, and gave advice on how leadership and risk management were related

J.D. Louk, a staff member for Alpha Phi fraternity led an interactive session on leadership development. Chapter representatives participated in a self-awareness exercise which taught that the foundation of leadership is leading yourself by knowing and understanding yourself and then understanding others. Louk emphasized that as leaders in the chapter, social and emotional intelligence is key when communicating to fellow chapter members. This discussion was followed by another exercise which taught members how to deal with different personality types.

The chapter representatives also went into breakout sessions where interactive group discussions on chapter management were led by the national board members. The topics focused on developing chapter guidelines, chapter finance, and risk management. These discussions taught members on how to influence and build a progressive chapter while promoting a positive self-governance within the chapter to manage finances effectively and bringing awareness on the importance of risk management.

## Today’s Greek Community

### Fraternities Build Better Leaders and More Active Citizens



Fraternities are built upon the values of mentoring. This is something that is ingrained in the way our organizations operate. Fraternity men are mentored by big bros, big sis, officers, their alumni, and advisors. This forges tremendous relationships. While fraternity men receive a lot of advice, guidance and support from their mentors, they are also playing that role in someone else’s life. Giving back and sharing your knowledge with those that follow you can be one of the most rewarding experiences you’ll have in college. But don’t let these lessons end in college. Mentoring should become a life-long habit for fraternity men; teach others what you have been taught and give to others what you have been given.

# ΛΦΕ Class of Fall 2011 Graduates

Lambda Phi Epsilon graduates of Fall 2011,

As you look back on a journey - a journey that started out with hesitant, tentative steps, you may see just how far you have progressed. I thank you greatly for your contributions towards our fraternity and hope that you do not forget about Lambda Phi Epsilon in your future successes.

As you face and tackle the inevitable changes, hold true to yourself. Remember to hold onto your value system, your work ethic and most importantly, your humanity. Today's achievements may eventually fade or even be forgotten. The applause may become a distant memory and your certificates and medals may gather dust on a shelf or in a drawer. But, you will always be remembered for caring enough, for helping someone, for making someone feel special and appreciated for the relationships you have made throughout your collegiate career. It is these qualities that will guide you further on your journey.

Congratulations to all of you and best of luck in all your future endeavors. Our future is destined in your capable hands as leaders among men.

*Tony Kim*

National Academic Chair

## **Congratulations to all our Fall 2011 Graduates!!!**

Alan Peng	Gavin Liu	Kevin Lee	Sung Gim
Alex Kwok	Heng Xin Fun	Kevin Sun	Timothy Liu
Alex Tam	Jason Vuong	Ky Ge	Tommy Lee
Ben Chang	Jeff Lu	Lance Zhao	Tony Shin
Charles Lee	Jerome Hwang	Meng Lee	Vang Xiong
Daniel Kim	Ji Jung Kim	Michael Chen	Vincent Ly
Daniel Lee	Joel Dubray	Michael Esuabana	William Zeng
Dave Guo	John Zhang	Raymond Chu	Xin Jin
David Kim	Kelvin Si	Richard Wing	
Erick Ko	Kenneth Fujita	Steven Tang	
Gary Hu	Kevin Ho	Sundona Kittikhoun	

\*Please note this list of graduating seniors is generated from the academic assessments collected from each chapter and only contains students that were listed as graduating this semester.



**Lambda Phi Epsilon**

