



CONTENTS:

▶ MIDYEAR ACADEMIC MESSAGE

○ MIDYEAR | ○ DALLAS, TX | ○ 2011



▶ ACADEMIC ASSESSMENT DATA

▶ SURVIVOR PROGRAM



▶ GRADUATING SENIORS

Lambda Phi Epsilon *focus*

A NEW FOCUS ON THE FRATERNITY



Dallas Midyear 2011

Salutations!

What a GREAT time to be a Lambda! There are so many exciting and fulfilling initiatives taking place in the fraternity as the national officer corps has begun to revitalize and refocus the efforts of individual chapters and the fraternity as a whole to better reflect its size and influence in the Asian community through academics, leadership, brotherhood, and service.



As your national academic chair, I am confident we are moving in the right direction to provide a stable academic foundation for your chapter. My main focus now is to create a program to produce the next generation of leaders who not only place their efforts in the service of the fraternity but to also enable an individual to be a responsible citizen who makes an impact in their contributions to society; a program to teach new members the vital skills necessary for survival in the modern world. This will be called the Survivor program.

As a member of Lambda Phi Epsilon now in my 6th year of service, I can say with complete conviction that what makes our fraternity exceptional are the individual brothers who stand by our letters proud, with unrelenting dedication to uphold the values of the fraternity and an unbridled commitment to help our aspiring young members to become the compassionate, highly competent leaders of tomorrow. Lambda Phi Epsilon, by virtue of the vision of our founders, is on a path of greatness through the ongoing efforts of the current national officer corps. These are exciting times and I will continue to move forward on our agenda to promote academic initiatives for the new year. We appreciate your interest and welcome your involvement.

IEB
Tony Kim
National Academic Chair

Academic Assessment

The chapter academic policies as well as the academic chair responsibilities have been sent out as a resource for your chapters to utilize. I have also successfully gathered academic data from all active chapters through academic assessments and carefully analyzed the data to provide results on the academic status of our fraternity on the national level. As an important tradition in the fraternity, we will continue to recognize exceptional Lambda Phi Epsilon members who have demonstrated academic excellence by providing three scholarships for 2011. The applications have been sent out and the winning candidates will be recognized formally at this year's convention.

We have received 34/40 academic assessments and our data shows that our active strength is at 483 with the average member being a 3rd year junior. Our fraternity mostly consists of very few freshman as shown in Figure 1. The average active's GPA is 2.99 and you will notice that our GPA distribution is skewed right as shown in figure 2. The average active house consists of 14 members with an average house GPA of 2.98. Other relevant information is not shown due to confidentiality.



How is our fraternity doing academically?

We have carefully done a thorough analysis of all chapters throughout the nation with the aid of academic assessments.

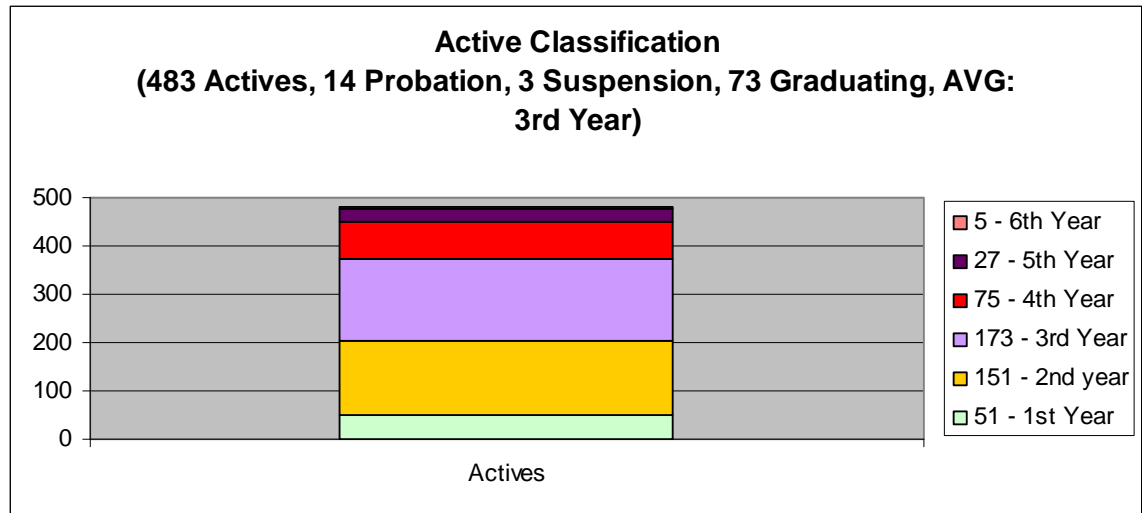


Figure 1: Active Classification

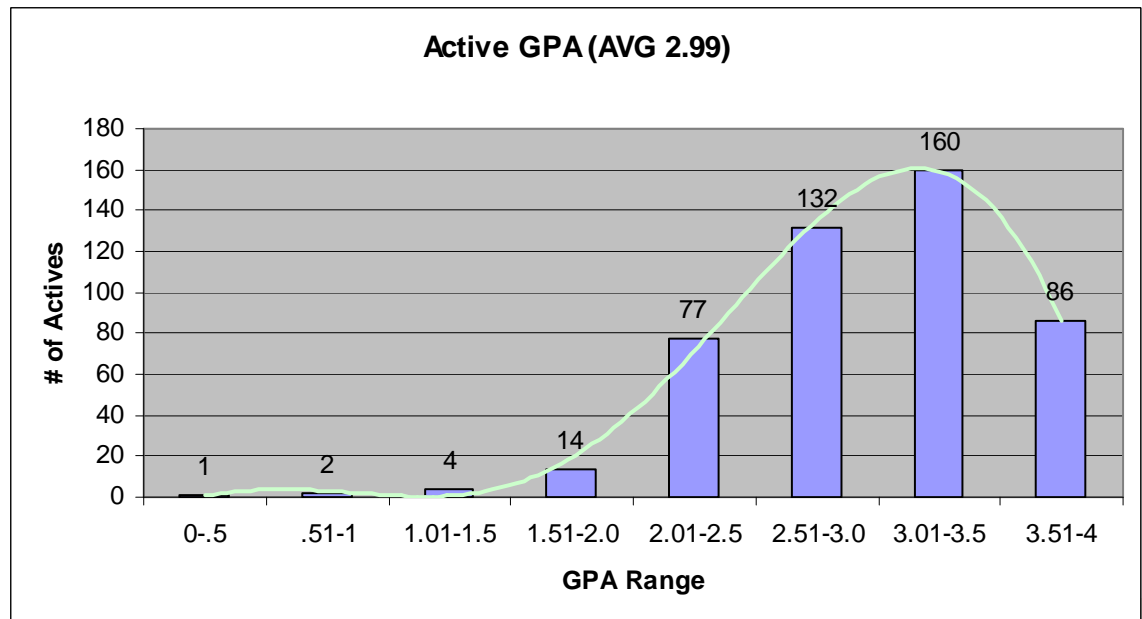


Figure 2: Active GPA

ΛΦΕ Lambda Phi Epsilon: Survivor Program



ΛΦΕ Survivor Program

"Teaching new members the vital skills necessary for survival in the modern world"

You are told that to make it in life, you must go to college. You work hard to get there. You or your parents drain savings or take out huge loans to pay for it all. And you end up learning.....not much. One thing that all of us can't deny is the importance of a college education. After all, with your college degree, you are able to earn a high salary while working in a field you enjoy. While an educational system is an important and integral part of our society, college is seriously lacking when it

comes to providing you with the particular skill set necessary to get ahead in today's world. Life skills are some of the most important skills you can have but are rarely taught in college, rather learned through experience. Lambda Phi Epsilon will fill this gap by implementing a survivor program that will teach new members the vital skills necessary for survival in the modern world. The program is centered on the following principles – brotherhood, professional development, time management, money management, health and wellness, goal setting, critical thinking, service to the community, and most importantly, leadership. Lambda Phi Epsilon will produce the next generation of capable leaders among men ready to tackle the problems of tomorrow.

FAQs:

How will it be implemented?

The survivor program will be added to the new member manual required by all incoming members. New members will have an activity or assignment due each week.

When will it start?

The program will be rolled out after this year's convention in the Fall.

Who will teach the new members these skills?

The academic chair of each chapter will be responsible for teaching the new members a new skill each week during study hours.



Going Beyond Social Experience

Fraternities Build Better Leaders and More Active Citizens



Fraternity and sorority alumni compose 23% of the US House of Representatives and 41% of the US Senate. Check out www.nicindy.org for the complete list of Greeks that serve in the 112th Congress as well as new Greek Governors.

ΛΦΕ Class of Fall 2010 Graduates

Lambda Phi Epsilon graduates of Fall 2010,

As you look back on a journey - a journey that started out with hesitant, tentative steps, you may see just how far you have progressed. I thank you greatly for your contributions towards our fraternity and hope that you do not forget about Lambda Phi Epsilon in your future successes.

As you face and tackle the inevitable changes, hold true to yourself. Remember to hold onto your value system, your work ethic and most importantly, your humanity. Today's achievements may eventually fade or even be forgotten. The applause may become a distant memory and your certificates and medals may gather dust on a shelf or in a drawer. But, you will always be remembered for caring enough, for helping someone, for making someone feel special and appreciated for the relationships you have made throughout your collegiate career. It is these qualities that will guide you further on your journey.

Congratulations to all of you and best of luck in all your future endeavors. Our future is destined in your capable hands as leaders among men.

Best Regards,

Tony Kim

National Academic Chair

Congratulations to all our Fall 2010 Graduates!!!

David Mac	Brian Heng	Tet Lin	Jason Lee
Jimmy Dileo	Philip Kou	John Yue	Justin Kim
Jason Lin	Philip Chang	Kam Munawar	Edward Chen
Arthur Su	Victor Li	Andrew Mak	Anthony Chon
Toan Pham	Anthony Bui	Jeffrey Chou	Lucas Chi
Eamon O'Connor	Jason Wang	Chris Wong	Alexander Lo
David Shim	Justin Kim	Ming Ho Chan	Andy Zhang
Martin Kim	Eric Wu	Frank Cifuentes	Kunhee Cho
Ramon Qiu	Brian Kang	Jimmy Cho	Voung Nguyen
Kevin Chiang	Chaejoon Lim	Braulio Salas	Justin Abraham
Kevin Chu	David M. Kim	Christopher Konishi	Jason Tam
Jeffrey Tan	Jason Liu	Kevin Lee	Steven Truong
Samuel Chan	Derek Tran	Kenneth Fujita	Ian N. Knepper
Carlo Yang	Eric Iki	Brandon Ng	Khai Nguyen
Joshua Fong	Justin Lam	Monroe Chen	John Nguyen
Alex DeVera	Ivan Yang	Michael Yim	Dinh Nguyen
David Li	Nian Liu	Eric Liu	Thien Nguyen
Davis Huang	Will Chu	Perry Wong	Ye Mon Min

*Please note this list of graduating seniors is generated from the academic assessments collected from each chapter and only contains students that were listed as graduating this semester.



Lambda Phi Epsilon